

TRANSPORT DIRECT

NEW VERSION OF THE NaPTAN VIEWER

GUIDANCE NOTES

November 2009

TRANSPORT DIRECT

NEW NAPTAN VIEWER

Guidance Notes

CONTENTS

1	Enhancements.....	3
2	Access to the NaPTAN Viewer.....	3
3	Data Updates.....	4
4	Comments and requests for help and information	4
5	Home Page.....	5
6	Finding a NaPTAN point.....	5
7	Finding a Locality.....	6
8	Finding a Grid Reference	7
9	Finding a specific Authority	8
10	Maintain Current Scale	8
11	Zoom	9
12	Re-centre.....	9
13	ID NaPTAN.....	10
14	ID Locality.....	11
15	Select Group.....	11
16	Authority Boundaries	12
17	Filter by Authority.....	12
18	Transport	13
19	Locality	13
20	Trial locality coordinates	14
21	Scale and Set Scale	15
22	Key	15
23	Message Box.....	16

A new version of the NaPTAN Viewer will be released on 26th November 2009. This version includes all of the functions of the original viewer and has a number of enhancements that have been developed in response to user comments.

1 Enhancements

The enhancements (shown in these Guidance Notes by *****) include:

- The display of the date that the data was last updated from the national database.
- A change to the way that DELETED stops are displayed and the ability to suppress the display of DELETED stops in order to make mapping clearer, especially where there is a large number of such stops.
- A function to suppress the display of stop names to make mapping displays clearer.
- Display of locality details (name and hierarchy) in addition to the NatGazId in stop details.
- Inclusion in stop details for the Type Code e.g. HAR or MKD.
- A change to the sequence of information displayed in stop details whereby the standard name components are in the right order with the stop type and record status together.
- An additional field in stop details showing how the stop name is currently displayed in Transport Direct's gazetteers.
- The inclusion of Coach Exchange Points in the range of stops displayed.

2 Access to the NaPTAN Viewer

Access to the new version of the Viewer is still by means of the URL:

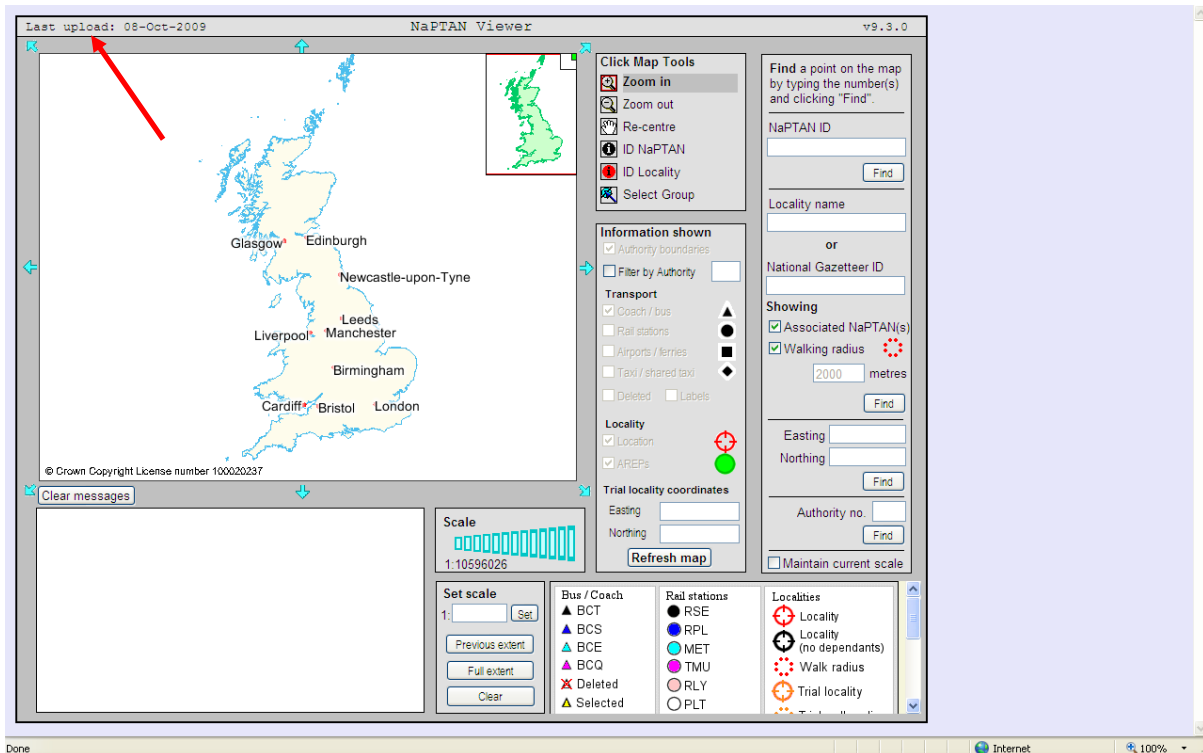
www.transportdirect.info/naptanviewer

using the user name and password supplied. Requests for access can be made via the JourneyWeb Help Desk at:

journeyweb.help@thalesgroup.com

3 Data Updates

The data in the NaPTAN Viewer is currently updated at least every two weeks by Transport Direct. This update is usually complete by Thursday morning and is based on data in the national databases on Tuesday of that week. When an Authority submits a NaPTAN load to Thales, this is generally processed to the NaPTAN database by the start of the second working day after receipt. However, it will not reach the NaPTAN Viewer until Transport Direct carries out the next update. *The date of the last update to the NaPTAN Viewer is displayed in the top left hand corner.



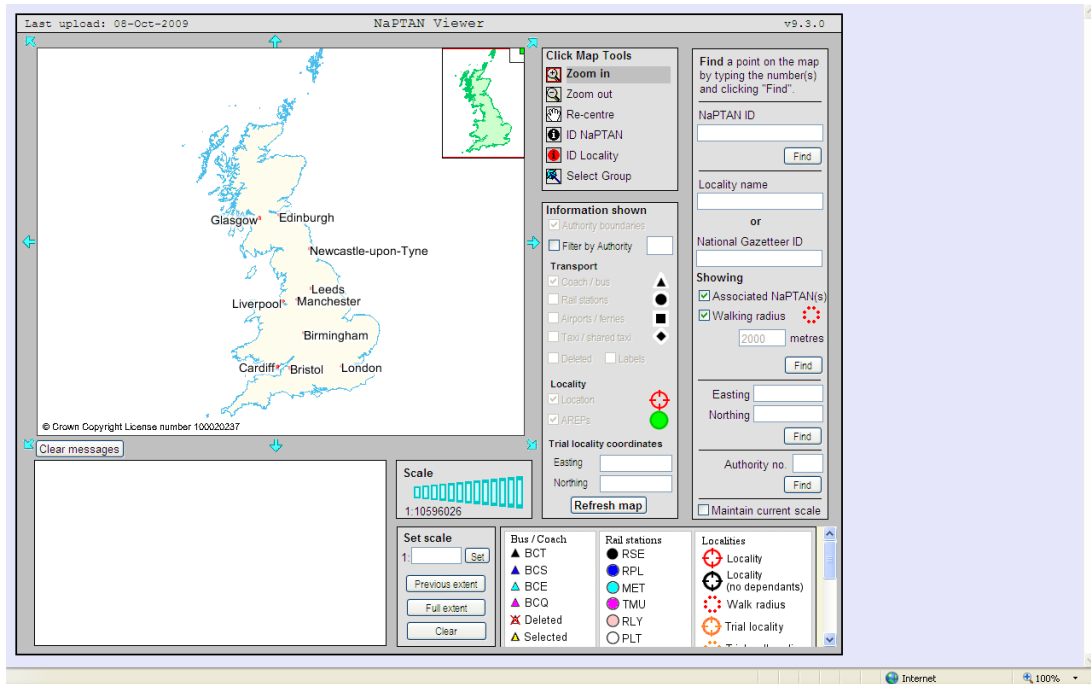
4 Comments and requests for help and information

These may be addressed to the JourneyWeb Help Desk:
journeyweb.help@thalesgroup.com

and Thales will do their best to help users with queries. However, it should be noted that the NaPTAN Viewer has not been developed by Thales and is not supported by them. It is effectively a “spin-off” from the Transport Direct Portal, which has been developed to help authorities and others working with NaPTAN records. If Thales cannot deal with a query, they will refer it to the Transport Direct team to deal with.

5 Home Page

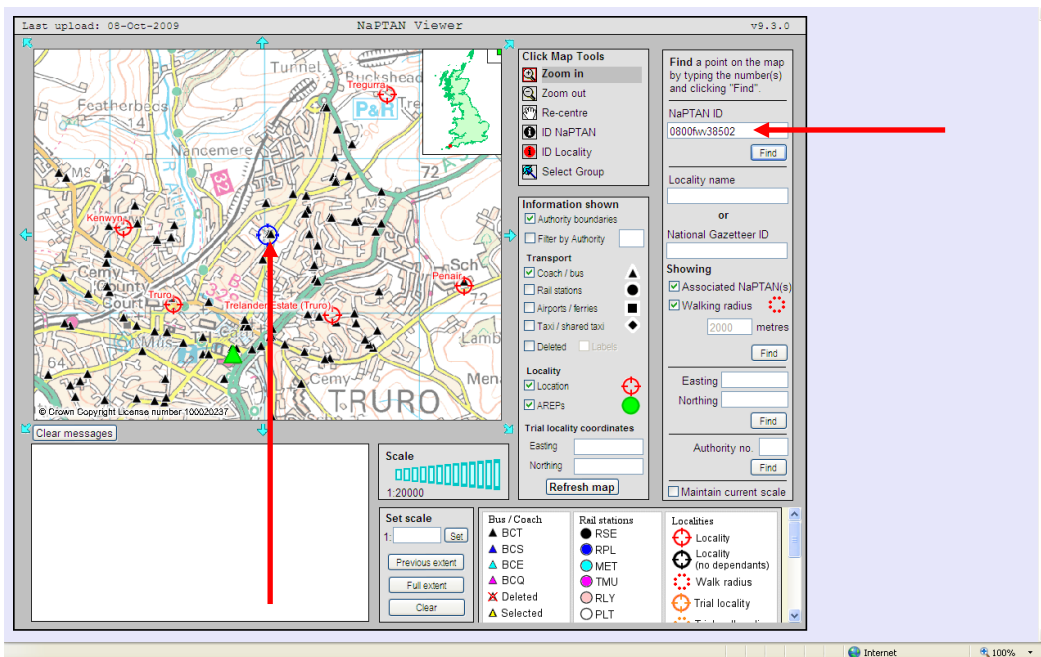
The home page provides access to all the features of the Viewer: Each feature is described in the following sections.



SECTION A: REPRESENTING DATA ON A MAP

6 Finding a NaPTAN point

Enter a NaPTAN AtcoCode or *Coach Exchange Point ID into the NaPTAN ID box and click *Find*. The requested point will be highlighted on the map with a blue target marker.



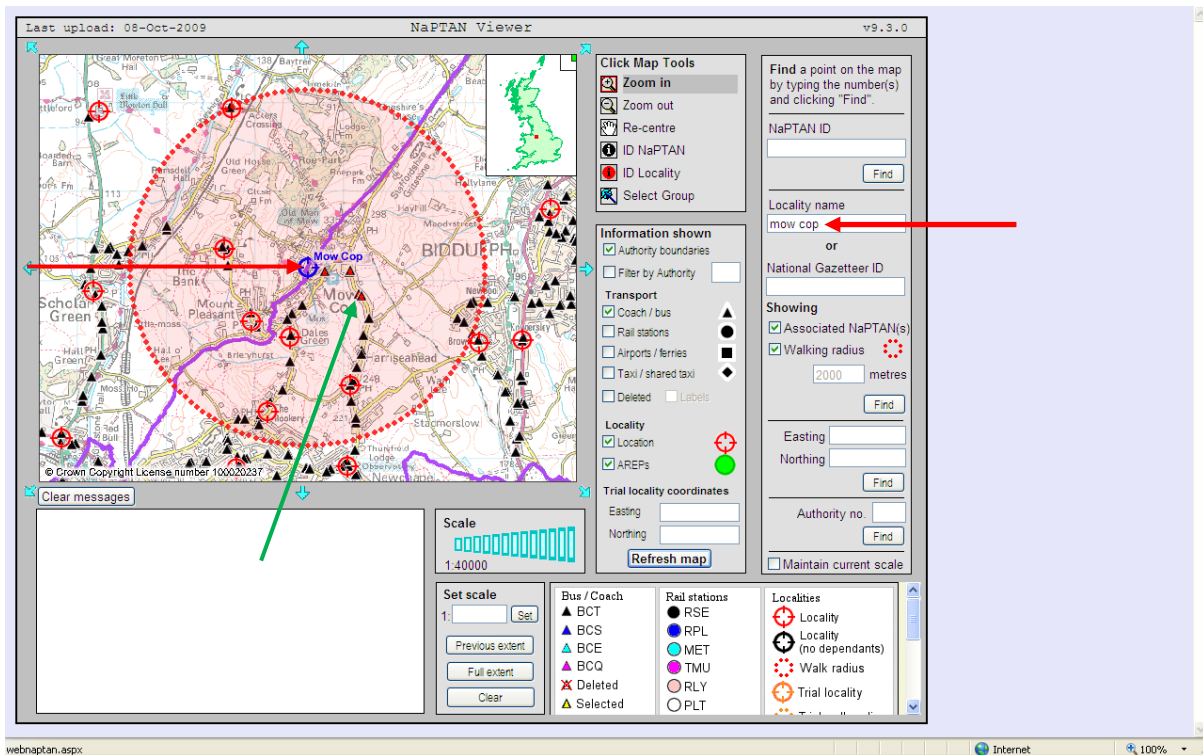
7 Finding a Locality

Enter either the name of the locality or its National Gazetteer Id in the appropriate box and click *Find*. If the name you enter applies to more than one locality you will be presented with an ambiguity list. Select the required locality from that list and click *Find*. The locality requested will be highlighted on the map with a blue target marker.

If the *Showing Associated NaPTANs* box is checked, all NaPTANs associated with the locality you have selected will be shown by a red triangle.

Other NaPTANs in the area remain as black triangles if their type is BCT (or, dependant on type, NaPTANs will be displayed in other colours and shapes as shown in the key). Other localities in the area appear as either red targets (these are linked to dependant NaPTANs) or as black targets (these have no NaPTANs linked to them).

The *Showing Walking Radius* facility is fixed at 2000m. This is the maximum recommended radius for a locality. If associated NaPTANs (red triangles) fall outside that radius, they should be reviewed to see if they are linked to the correct locality, or whether a locality is missing from NPTG. However in some situations it is sensible to allow the locality to extend beyond the 2000m radius.

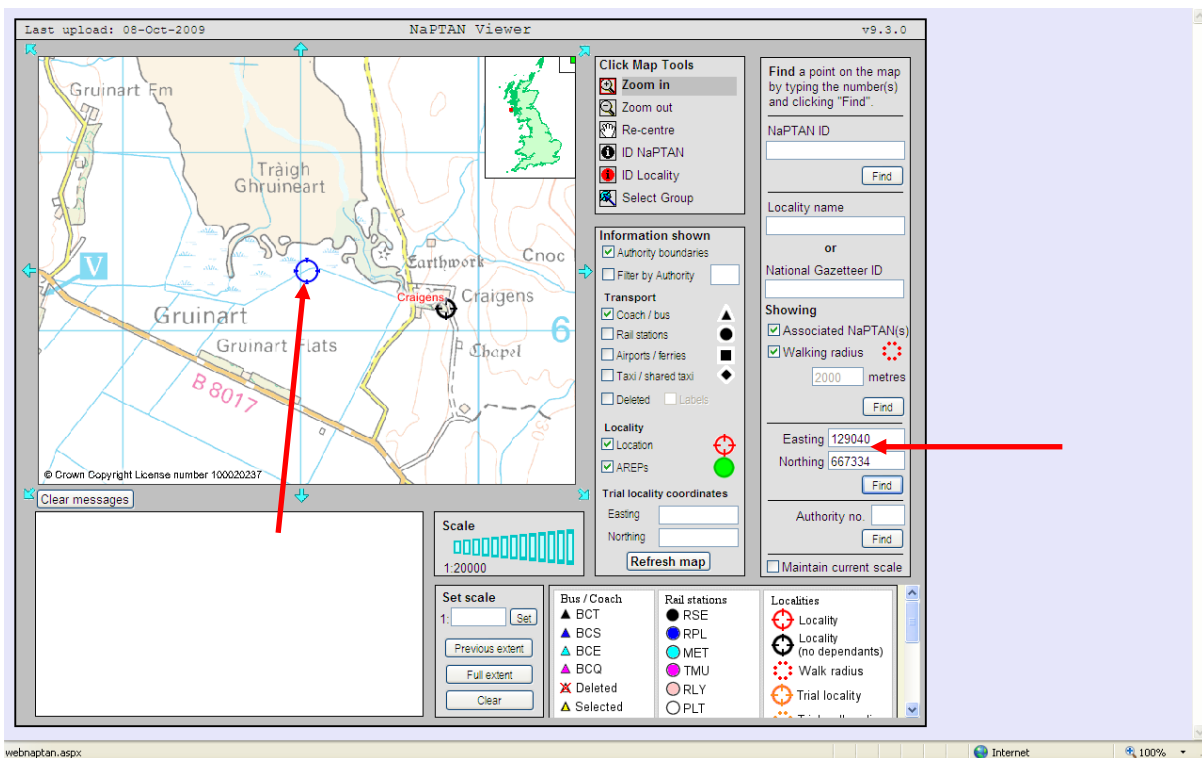


8 Finding a Grid Reference

Enter 12- or 13-digit Ordnance Survey Grid Reference (OSGR) Easting and Northing in the appropriate boxes, click *Find* and the required point will be indicated on the map by a blue target marker. 13 digit OSGR comprising 6/7 digit elements are used in the extreme north of Scotland.

To find the OSGR of any point on the map see section 13 (Id NaPTAN) below.

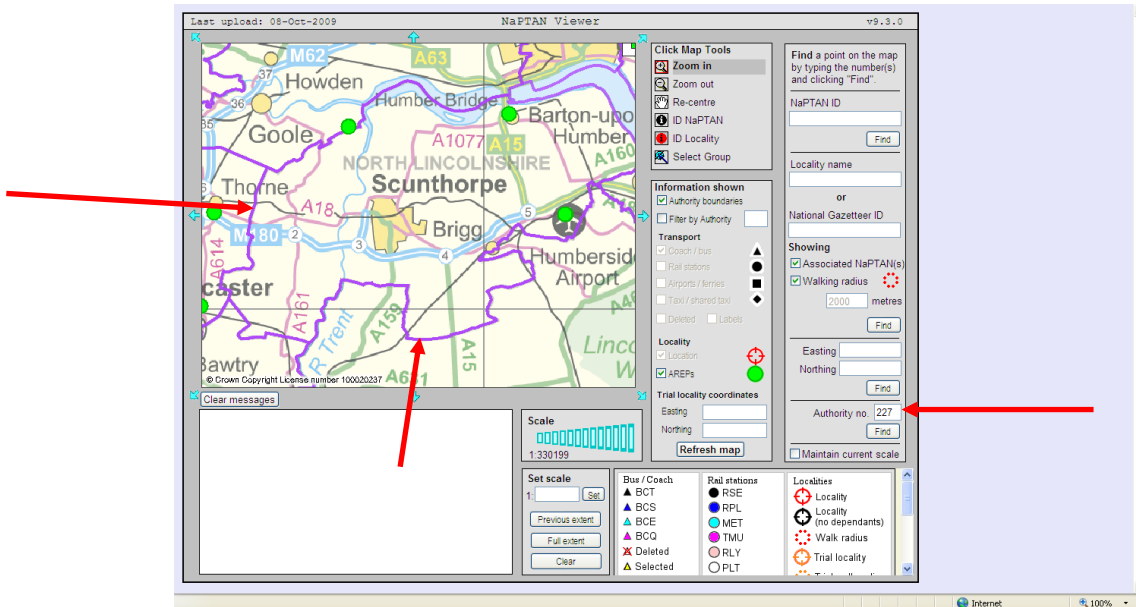
The full 12- or 13-digit OSGR can be entered as a single string (with or without a space separator) into the easting field rather than into the two boxes separately. This allows for the direct copy & paste of OSGR fields from NaPTAN or NPTG records.



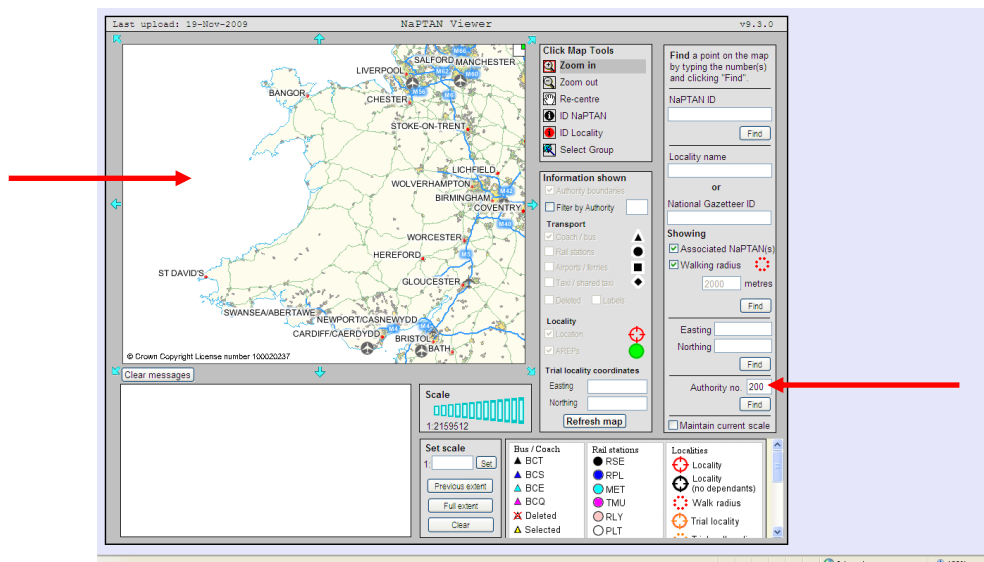
9 Finding a specific Authority

Enter an Authority prefix (as used in AtcoCode) in the Authority no. box and the map will be scaled to show that Authority's area, calculated from the NaPTANs belonging to it.

The example below is for Authority 227 North Lincolnshire and the Authority boundary is shown as a purple line on the map.



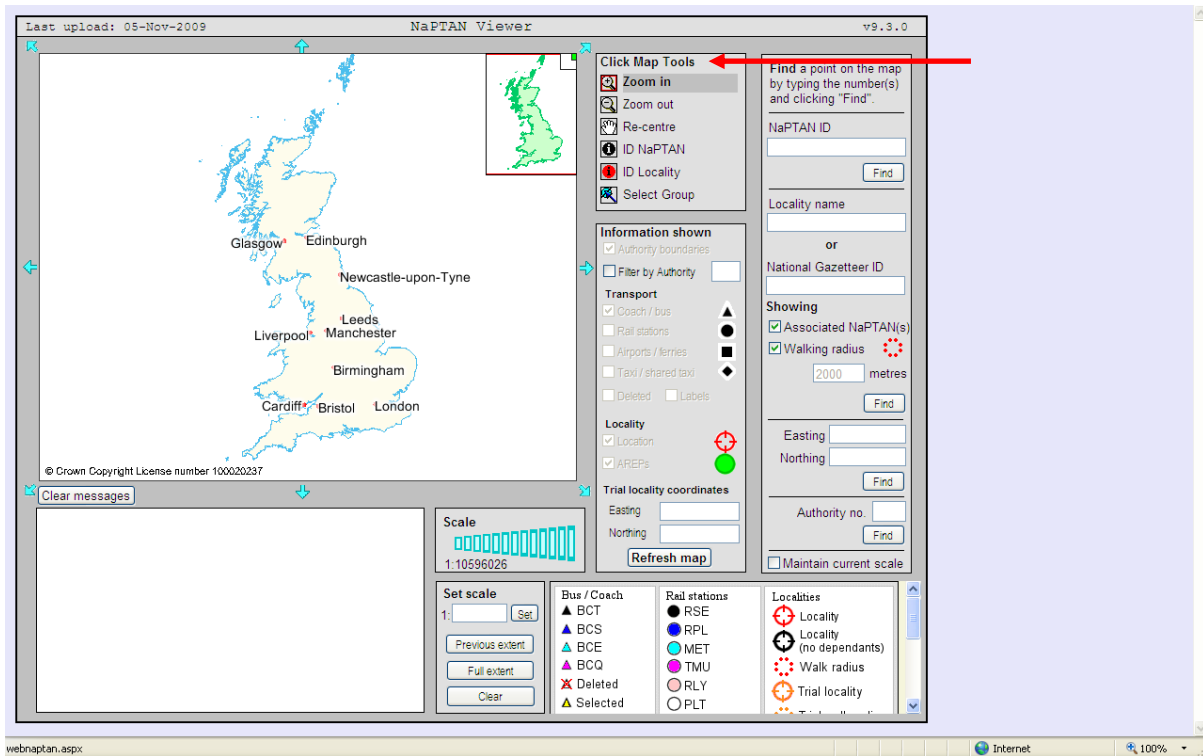
If there is an incorrect or “out-of-area” NaPTAN in the Authority’s NaPTAN list, the area shown will be greater than that of the Authority (as in the example below). Seriously incorrect NaPTANs can result in the map defaulting to the whole of Great Britain.



10 Maintain Current Scale

If the Maintain Current Scale box is checked, the current scale of the map remains the same rather than being adjusted as is appropriate to the point or area selected.

SECTION B: MAP TOOLS



11 Zoom

Select the *Zoom in* tool; repeated clicking on the map will zoom in, centred on the click point, progressively to the minimum scale of 1:2000.

Select the *Zoom out* tool: repeated clicking on the map will zoom out, centred on the click point, progressively to the maximum possible scale.

12 Re-centre

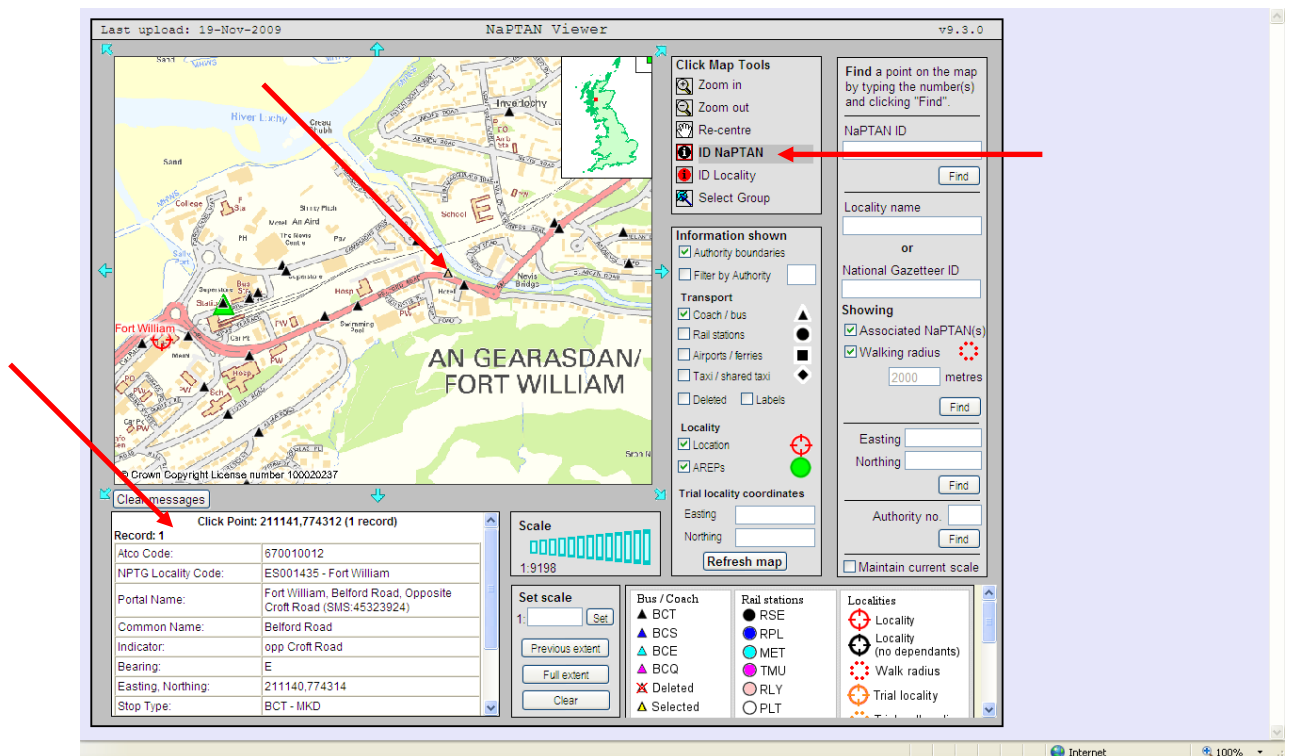
Select the *Re-centre tool*; clicking on the map will centre the map at the click point without changing the zoom level.

13 ID NaPTAN

Select the *ID NaPTAN* tool; clicking on the map other than on a NaPTAN marker will result in the OSGR of that point being displayed in the message box.

If the click point is a NaPTAN marker, both the OSGR and the details of the NaPTAN will be displayed; scroll down on the message box to see full details. If there is more than one NaPTAN at or close to the click point, then, depending on the scale of the map, details of all such NaPTANs will be shown.

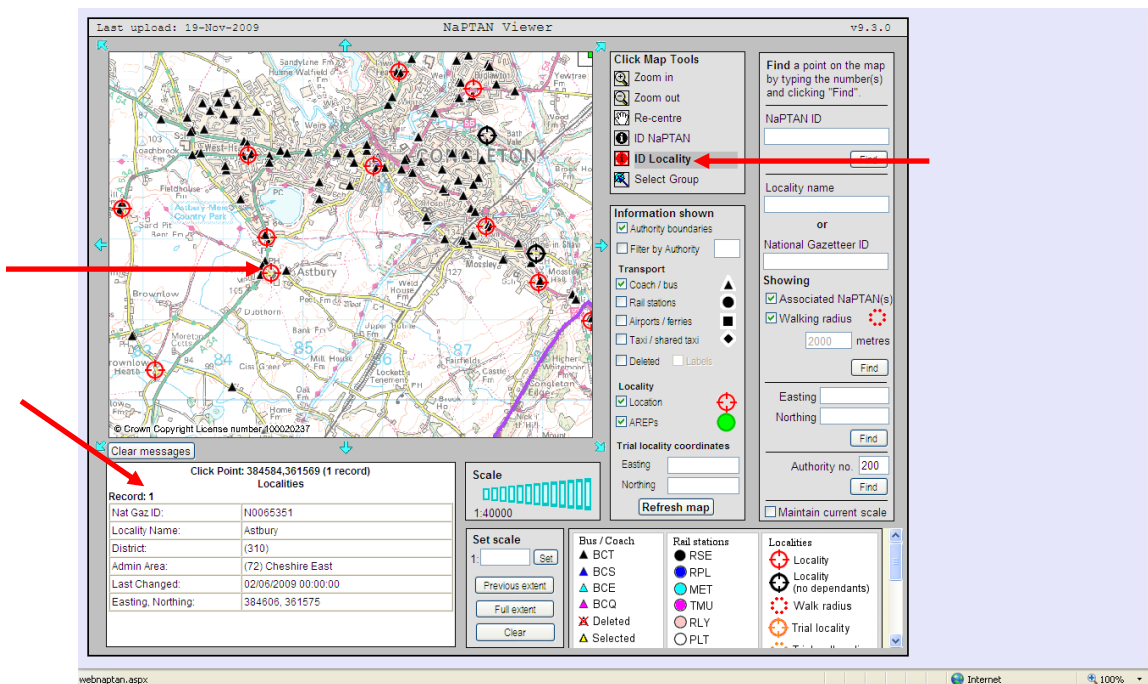
Please note that even if a NaPTAN marker is shown on the map, details thereof will be shown only if the appropriate Transport type is checked (see section 18 Transport below).



14 ID Locality

Select the *ID Locality* tool; clicking on the map other than on a Locality marker will result in the OSGR of the click point being shown in the message box.

If the click point is a Locality marker, both the OSGR and the details of the Locality will be displayed in the message box; scroll down on the message box to see full details. If there is more than one Locality at or close to the click point, then, depending on the scale of the map, details of all such Localities will be shown.

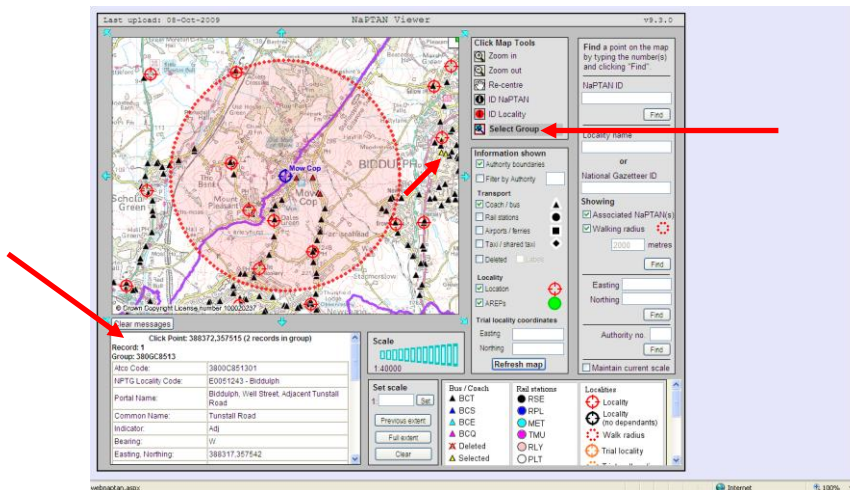


15 Select Group

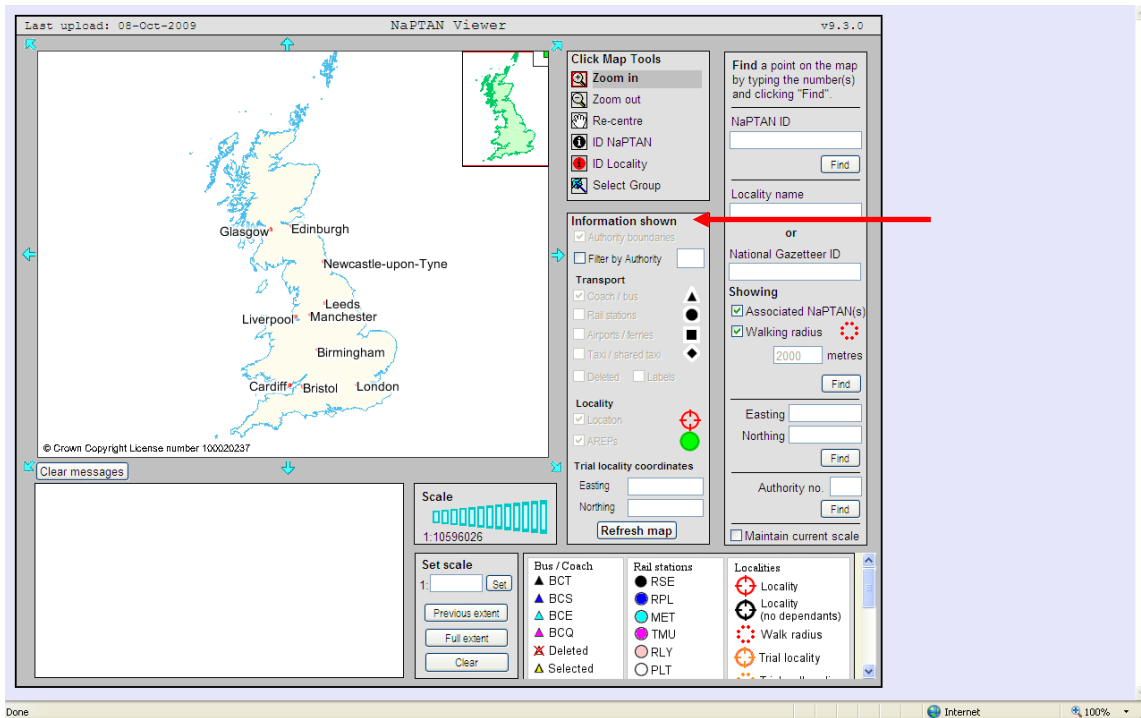
Select the *Select Group* tool; clicking on the map other than on a NaPTAN marker will result in the OSGR of the click point being shown in the message box.

If the click point is a NaPTAN marker, details of all the NaPTANs in the Stop Area will be displayed in the message box; scroll down on the message box to see full details.

Please note that even if a NaPTAN marker is shown on the map, details thereof will be shown only if the appropriate Transport type is checked (see section 18 Transport below).



SECTION C: INFORMATION SHOWN



16 Authority Boundaries

With the *Authority boundaries* box checked, local authority boundaries are shown by a purple line. To switch this facility on and off, check or uncheck the box and click on *Refresh map*.

17 Filter by Authority

With the *Filter by Authority* box checked, enter the Local Authority's NaPTAN prefix number in the adjacent box and click on *Refresh map*. The map will display only the NaPTANs belonging to that authority.

You may find this facility particularly helpful at local authority boundaries where it can be used to switch the stops for each authority on and off. It can also be used to identify "out-of-area" stops.

18 Transport

This facility allows you to select the stop types displayed on the map and for which details will be displayed in the message box. You can check any or all of the types and *you can choose whether or not to display stops with a status of DELETED by checking or unchecking the *Deleted* box and clicking on *Refresh map*.

Stop types for each category are as follows:

	Coach / bus		Rail stations
BCT	On-street bus/coach stop	RLY	National rail station access area (maintained by DfT)
BCS	Bay/stand within a bus station	RPL	National rail platform (maintained by DfT but not used currently)
BCE	Bus/coach station entrance	RSE	National rail station entrance
BCQ	Flexible stand allocation in a bus/coach station; also used for *NPTG Coach Exchange Point 9000xxxx		Tram / metro / underground
	Airports / ferries	MET	Metro/Tram/Underground Access area (maintained by DfT)
GAT	Airport access area (maintained by DfT)	PLT	Metro/Tram/Underground platform (maintained by DfT)
FER	Ferry access area (maintained by DfT)	TMU	Metro/Tram/Underground station entrance
FTD	Ferry port entrance		Taxi / shared taxi
AIR	Airport entrance	TXR	Taxi rank
		STR	Shared-taxi rank

At scales between 1:2,000 and 1:10,000, the Common Name and NaPTAN Code (SMS Code) of NaPTAN stops appear on the map. *To suppress the display of stop names to improve the clarity of mapping uncheck the *Labels* box and click on *Refresh map*.

19 Locality

The display of Localities on the map can be suppressed by unchecking the *Location* box and clicking *Refresh map*.

The display of AREPs (Adjacent Region Exchange Points) can be suppressed by unchecking the *AREPs* box and clicking *Refresh map*.

AREPs are used by Transport Direct to plan journeys between places that are close together but in different 'data regions'. The data regions currently are:

- Scotland
- North East
- South East, London, East Anglia, East Midlands.
- South West, Wales, West Midlands, North West, Yorkshire.

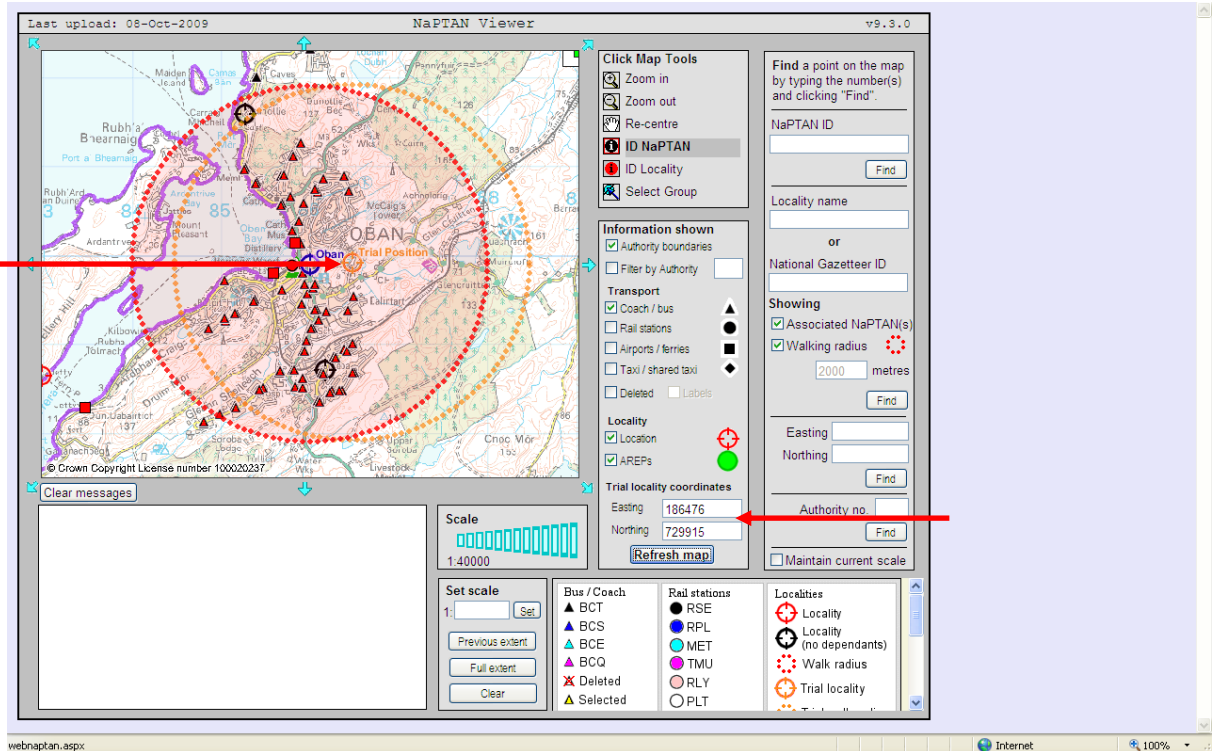
AREPs, which are shown along all regional boundaries except SE/London, can be amended only by DfT.

20 Trial locality coordinates

This facility allows you to display a grid reference on the map together with its 2000m walking radius. This is useful when creating or re-positioning a locality.

Entering an OSGR in the *Trial locality* coordinates boxes (see section 8 above for methods of data entry) and clicking on Refresh map results in an orange target with the legend 'Trial Position' appearing on the map.

Unlike the *Find a Grid Reference* facility, a Trial Position will be shown only if it appears on the map currently being displayed.



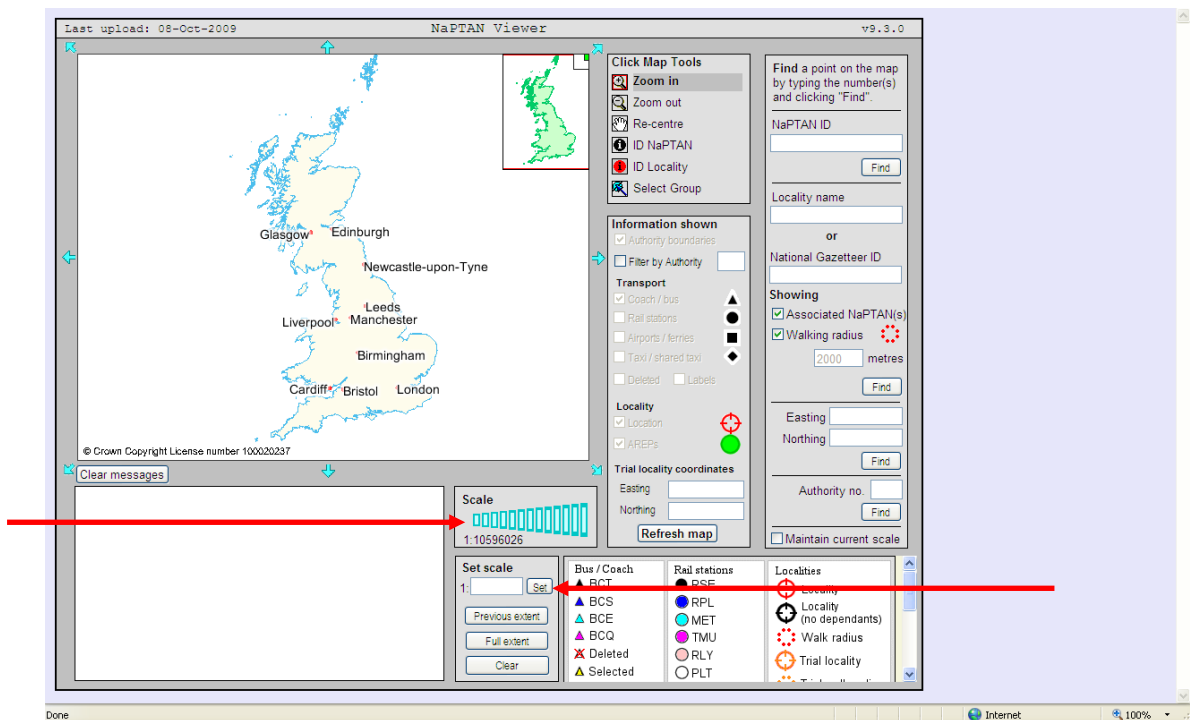
21 Scale and Set Scale

Clicking on the blue vertical bars will set the map scale as shown in the tool tip box ranging from 1:2,000 (bus station) to 1:9,000,000 Great Britain.

Entering a specific scale in the *Set Scale* box and clicking *set* will zoom the map in or out to the required scale. Clicking on *Previous extent* returns to the previously set scale and *Full extent* zooms out to a map of Great Britain.

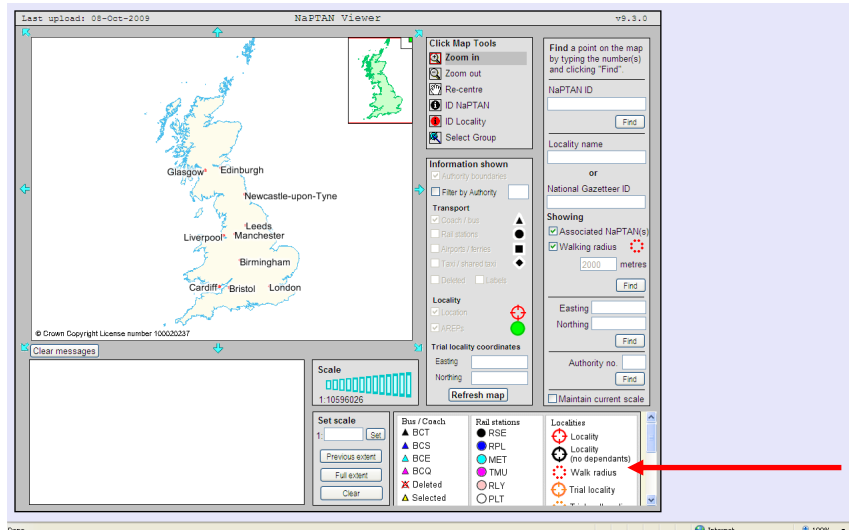
These features are particularly useful in allowing you to zoom in and out without re-setting the map tool e.g. when looking for NaPTAN points.

Clicking on *Clear* removes any previously selected points and on *Clear messages* removes messages allowing you to make and display new choices.

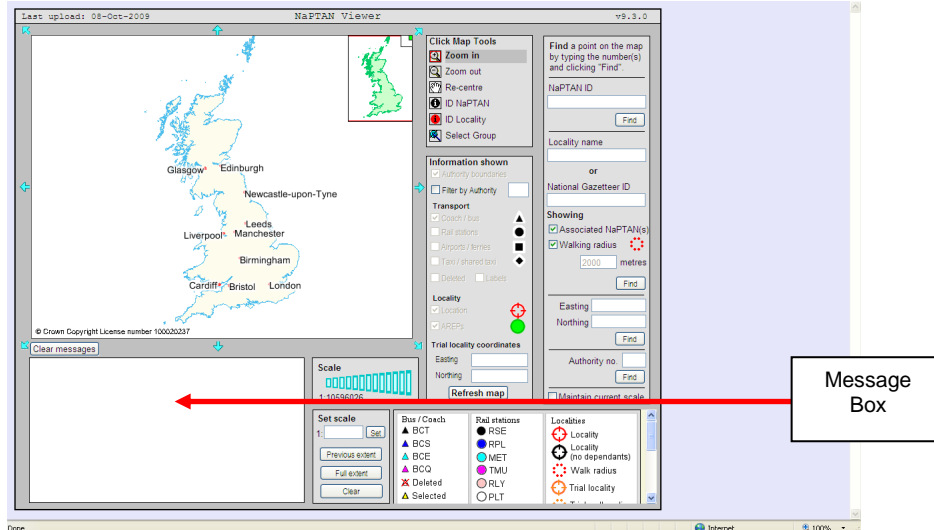


22 Key

Scroll down on the key box to show the meaning of markers and other map symbols.



23 Message Box



What the Message Box contains:

When the ID NaPTAN tool is used, the full details of the NaPTAN(s) at the click point will be shown. *The information is in the same sequence as it appears in NaPTAN and NPTG, name and hierarchy are shown.

*There is a field (*Portal Name*) to show the stop name as it currently displayed in Transport Direct's gazetteers. This takes the general form of "Locality, Street, CommonName/Indicator" (the sequence of CommonName and Indicator depends on the type of indicator). *Please note that different formats of stop name are used widely in the presentation of itineraries on TD and traveline, and in timetables from EBSR – on itineraries the name is based on "locality, CommonName/indicator (on Street)" (with the SMS Code added where relevant) whilst for EBSR timetables the "(on Street)" section is omitted.*

*The field "Stop Type" shows both the Bus Stop Type and its Sub-Type i.e. BCT plus MKD [marked stop], HAR [Hail & Ride stop], CUS [Custom & Practice stop] and FLX [Flexible Zone (which defines an area in which Flexibly Routed services operate)] is shown.

